

LEMUR DESIGN



www.lemurdesign.ca

About us

Based in Montreal, Québec, Lemur Design Inc. was created in 2017.

This is our management and advisory team:

- Abel CHOUINARD, CEO and Co-founder
- Jean-Martin CYR, Co-founder
- Sebastien DUVAL, Director of manufacturing
- Solenne VISART, International markets development

LEMUR
DESIGN



About us

Since 2017, highly qualified engineers focus their efforts in the development of high added value products.

Our mission consists in offering the best climbing equipments ever to the climbing gyms and the climbers around the world.

LEMUR
DESIGN



The adjustable wall

- Available in 3 sizes:

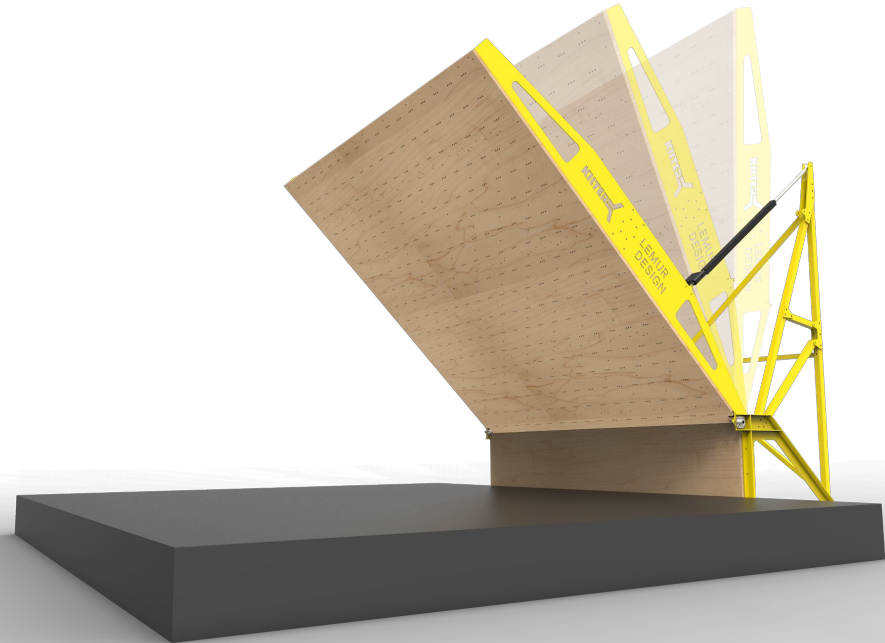
- 8x12 feet: 2,5m L x 3,6m H
- 12x12 feet: 3,6m L x 3,6m H
- 14x16 feet: 4,9m L x 4,3m H

A bold pattern allow to fix any holds freely on the wall.

A touch screen panel controls the angle from 5 to 70 degrees.

The movements are virtually noiseless and requires very little maintenance.

LEMUR
DESIGN



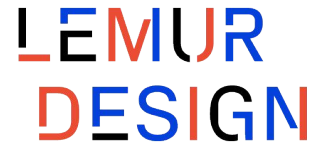
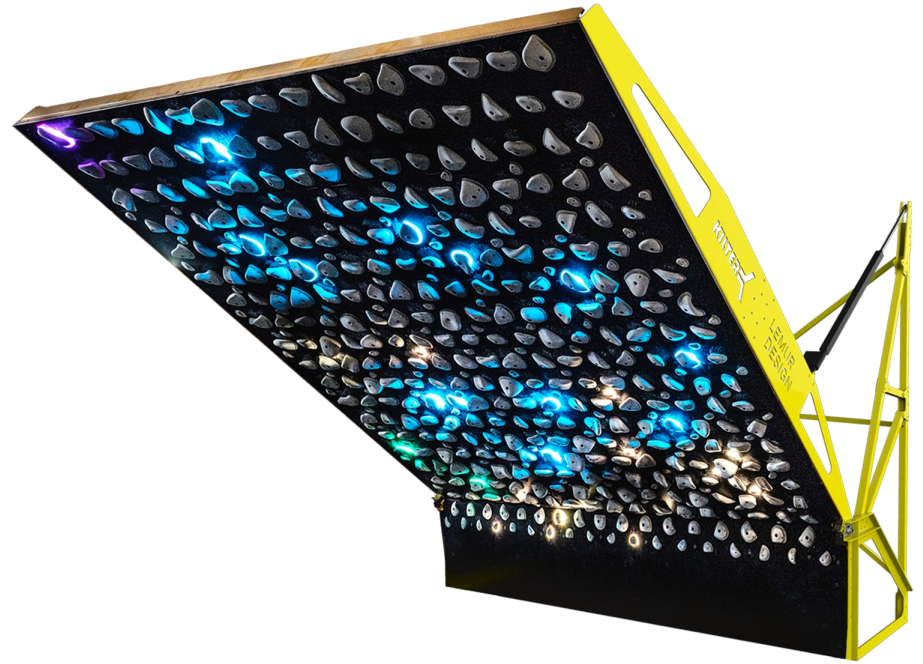
CE STAMPED

The Kilter Board

Lemur Design's adjustable walls were conceived in collaboration with Kilter Grips. The integration of both materials and technologies gives a perfect training wall.



KILTERBOARD VIDEO - IAN POWELL



LEMUR Fitness

In partnership with Gorila Fitness:

- Hang Board
- Peg Board
- System Board
- Campus Board

A complete and unique training solution for climbing gyms and climbers

LEMUR
DESIGN



Adjustable walls - Options

- Considering some additional costs, a custom and personalized design can be chosen for each wall:
 - customized panel color
 - customized color frame
 - logo on kickboard
- The wall can be entirely self-supporting
- The wall can be placed outside as far as the electric systems are protected from bad weather



Adjustable walls - Transport and delivery

- Get your wall very fast:
lead time from 6 to 8 weeks
- Packaging in custom flat boxes
- Delivery by sea everywhere in Europe between 15 to 20 days direct from Montreal

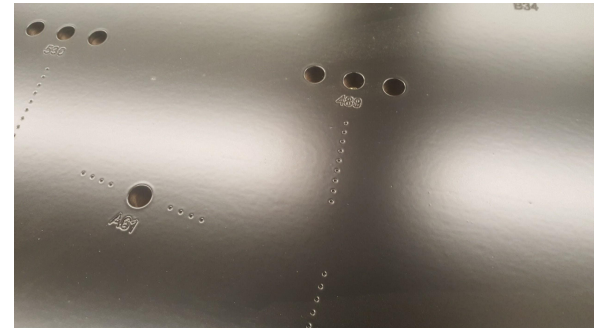


Adjustable walls - Installation

Easy and quick self installation based on the user manual provided:

- 1-2 days for a team of 2 gym employees
- Installation tools included with the walls
- Anchors not included (to be selected according to your specific floor)
- Installed with or without the mats on place
- No electrician is required, just a regular power outlet (country specific power cord shipped with every wall)

- All parts are manufactured and don't require any modifications
- For the Kilter Board, a pre-marking on the wall allow to fix directly the right hold in the right position and save one day of work by 2 people



Adjustable walls - Features, operations and support

Certification:

Our walls are CE certified offering them quality guarantees and allowing the selling everywhere in the EU

Warranty by Lemur Design:

- 1 year (installation not included)

Maintenance:

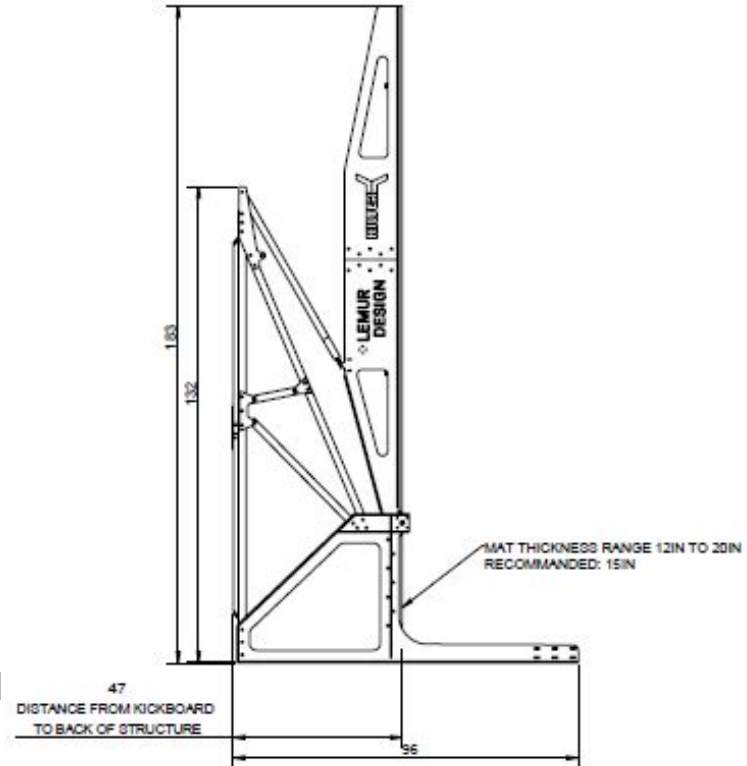
Full electric system and very few maintenance of the actuators

After-sales service:

A professional and accessible after-sales service for any support without any additional costs

Adjustable walls - Technical specifications

- **Anchors:** Those are not provided (to be selected according to your specific floor)
- **Voltage required:** 240V - 50HZ - 350W
- **Mats required (not provided):**
 - For a 8x12 wall: 16x16 feet = 5m x 5m
 - For a 12x12 wall: 20x16 feet = 6,1m x 5m
 - For a 14x16 wall: 22x18 feet = 6,7m x 5,5m
- **Space required:** you'll see in the documentation available all the detailed dimensions and consequently the space required for the three sizes of walls



Contact details

For any additional information or order, please contact Muriel Sarkany at Muriel@lemurdesign.ca or at +32 478 758 207.



[lemur_wall_design](https://www.instagram.com/lemur_wall_design)



[Lémur Design](https://www.facebook.com/LemurDesign)

info@lemurdesign.ca

Phone: +1.888.532.0285



www.lemurdesign.ca